

60 Ø STAINLESS STEEL
HOLLOW PIPE HANDRAIL
BOTH ENDS FIXED INTO
WALL / RCC COLUMN

EQ.

WALL /
RCC
COLUMN

750 / 900

1050 / 1200

AS PER MAIN PLAN

S

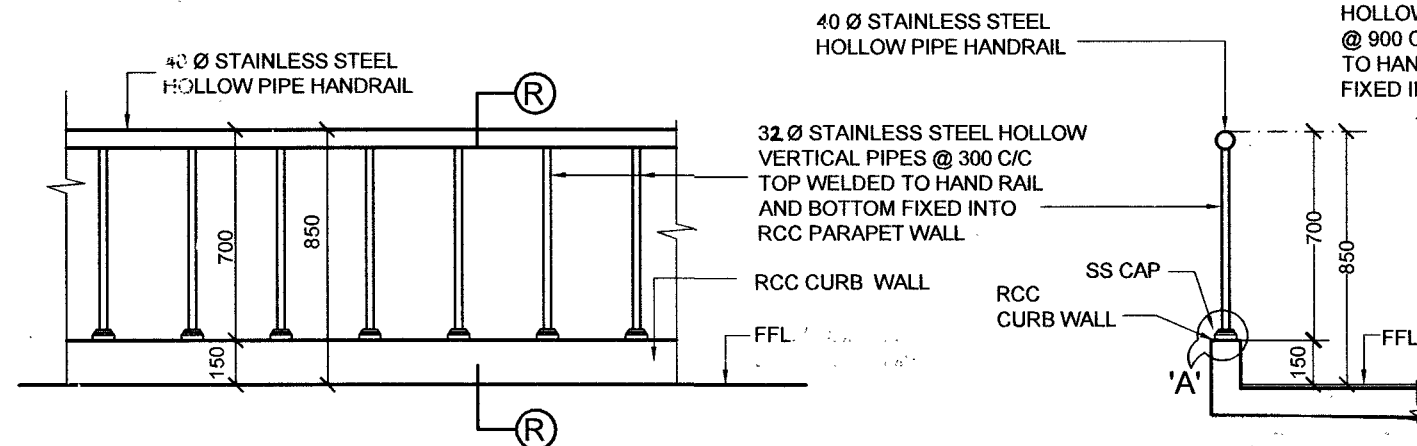
S

FFL

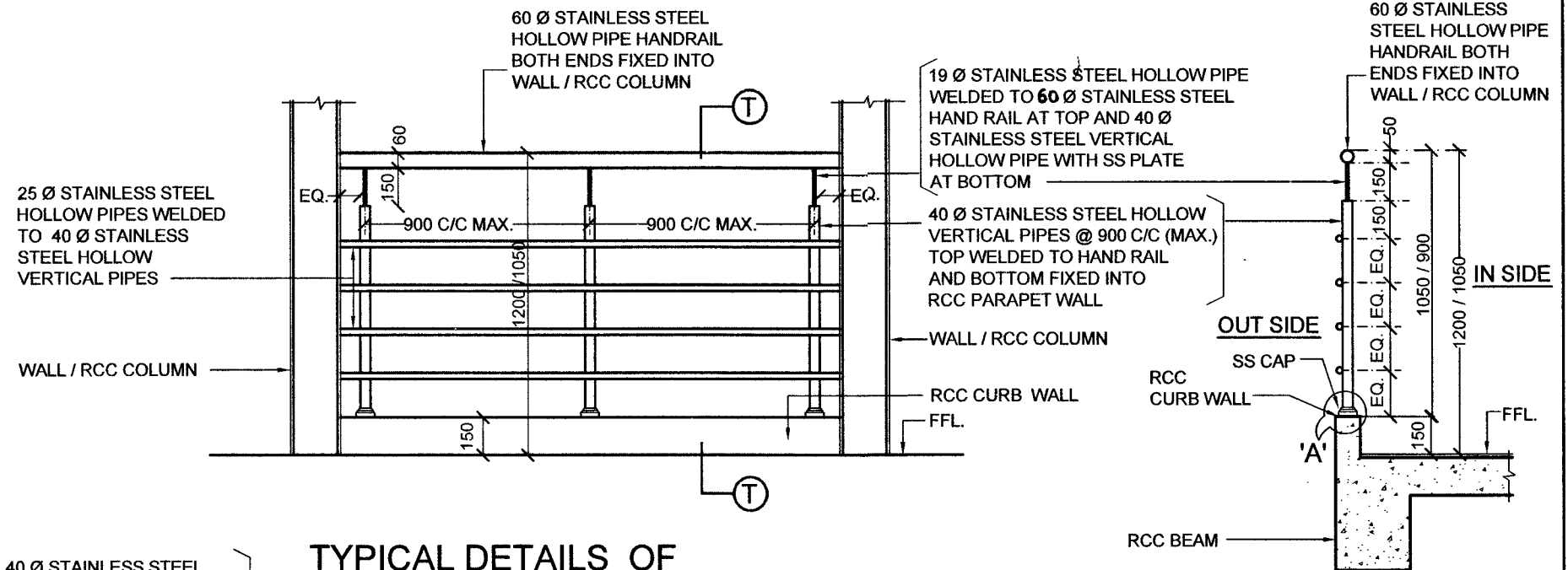
40
HO
@
TO
AN
RC

W
R

SCALE 1 : 25 TYPE - 6 (1050 MM HIGH FROM FFL.)
TYPE - 7 (1200 MM HIGH FROM FFL.)



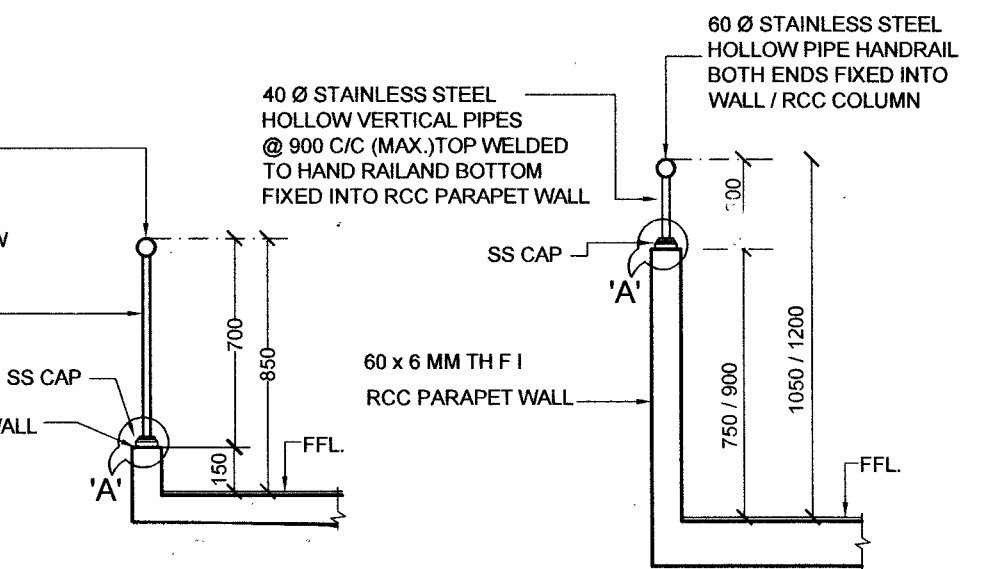
(RAMP FOR DISABLED PERSON)



SCALE 1 : 25




SCALE 1 : 25

TYPE - 8 (1200 MM HIGH FROM FFL.)
TYPE - 9 (1050 MM HIGH FROM FFL.)



SCALE 1 : 25

SCALE 1 : 25

SL NO	DATE	DESCRIPTION	SIGN.
REVISIONS			
TYPICAL DETAILS OF STAINLESS STEEL (SS) RAILING.			
TYPE - 5, TYPE - 6 & 7, TYPE - 8 & 9			
DATE	20 - 6 - 2022	CHIEF ENGINEER (NAVY) VISAKHAPATNAM ZONE	SHT. NO. 2/2
DRN	K. USHA		
TCD			
CKD			
SCALE	AS SHOWN	REF. DRG.NO.CEVZ/2022/TD-21	
 AAD (ARCH)		 JT. DIR. (ARCH)	 DIRECTOR (ARCH) FOR CHIEF ENGINEER